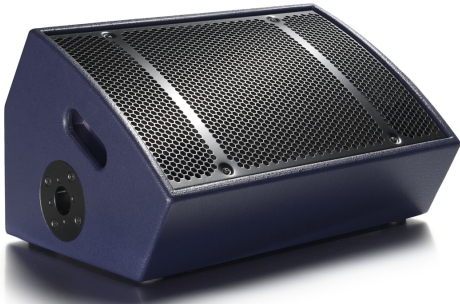


PSM12

The PSM12 addresses a need for an extremely powerful yet compact wedge monitor with the qualities of the ground-breaking PSM18 in a much smaller package.

Featuring a custom designed 4" voice coil 12" driver for maximum power at low frequencies and a 1.4" compression driver for high frequencies. Funktion-One's unique driver technology allows the crossover point to be nearly an octave higher than is typical, resulting in an extremely present but smooth sound particularly under pressure.

The 70° high frequency conical waveguide is coaxial with the 12" driver giving a point-source arrangement which is optimised for even dispersion and minimising feedback. Switchable between passive and active operation and supplied with a 35mm integral stand mount. Funktion-One's holistic driver, enclosure and waveguide design make this an outstanding monitor.



- Features:
- Small yet powerful
 - Neodymium magnets
 - Sturdy construction
 - Coaxial driver arrangement
 - Integral 35mm pole mount
 - Switchable passive network

Frequency Response (-3dB):	65Hz - 17kHz
Weight:	23kg (50lbs)
Nominal Dispersion:	70° Conical
Connectors:	2 x Neutrik NL4

Driver (Active)	Crossover Frequencies	Sensitivity (at 1m)*	Power (AES)	Nominal Impedance
12"	40Hz - 2.5kHz	101dB at 2.8V	400W	8Ω
1.4"	2.5kHz - Up	111dB at 4V	75W	16Ω
Driver (Passive)	Crossover Frequencies	Sensitivity (at 1m)*	Power (AES)	Nominal Impedance
12" + 1.4"	40Hz - Up	100dB at 2.8V	400W	8Ω

*Measured in half space

Specific crossover settings can be found at www.funktion-one.com/support

